

CAMEROON'S FOREST ESTATE

December 2015



MINISTRY OF FORESTRY AND WILDLIFE



WORLD RESOURCES INSTITUTE

SUMMARY OF LAND USE ALLOCATION WITHIN THE NATIONAL FOREST ESTATE IN 2015

LEGEND

Permanent Forest Estate (PFE)		
Allocation type	Number	Area (ha)
Forest Management Units (FMU)	116	6 743 023
Forest management plans approved	91	5 428 885
Forest management plans in process of elaboration	15	759 021
Not managed	10	557 117
Forest reserves	56	492 166
Protected areas (PA)	37	4 761 683
National Parks	26	3 645 994
Wildlife reserves	5	966 272
Sanctuaries	6	149 417
Hunting zones (ZIC/ZICGC)	68	5 409 014
Council Forests (FC)	60	1 554 518
Designated	26	721 910
Proposed	34	832 608
Non Permanent Forest Estate (nPFE)		
Community forests (Fcom)	446	1 533 325
Provisional conventions	162	544 807
Final conventions	284	988 518
Sales of Standing Volume (SSV)	179	338 756
Agro-industrial parcels	74	415 937

Areas in this table come from official documents (decree, public notice, management convention, etc.) for FMU, PA, ZIC/ZICGC, FC, Fcom and SSV. When the data are not available (some forest reserves and agro-industrial zones), the area is calculated using the mapping software. In some cases, hunting areas overlap with other forest titles. Area calculations include those overlapping areas (approximately 2 237 054 ha).

DATA AND MAP PRODUCTION

The data used for the production of this map have been assembled by a team composed of staff from the World Resources Institute (WRI), the Ministry of Forestry and Wildlife (MINFOP) and other partners, including the Centre Technique de Forêt Commune (CTFC) and GIZ-ProPSFE. Rainforest Alliance (RA) actively participated in the data validation process.

This map is produced by the WRI and MINFOP with the support of the United States Agency for International Development (USAID), the Norwegian Ministry for the Environment and the United Kingdom Department for International Development.

This initiative is also supported with software contributions from ESRI and HEXAGON.



MINFOP - WRI COLLABORATION

The World Resources Institute (WRI) and the Ministry of Forestry and Wildlife of Cameroon (MINFOP) have collaborated since 2002 to build national capacity to monitor and manage forests - focusing on modern techniques of information management. The two principle objectives of this collaboration are to:

- (1) Develop an integrated and easy to access forest information management system based on standardized methods; and
- (2) Train MINFOP and forest sector NGO staff in remote sensing, geographic information systems (GIS) and information analysis, in order to strengthen monitoring, management and decision-making around allocation and use of forest resources.

Together, this information is assembled in the Interactive Forest Atlas of Cameroon - a complete cartographic database containing forest land use allocation and related activities in Cameroon. This poster represents a snapshot as of December 2015 of the Forest Estate's status from the Forest Atlas database.

Locality

- Political capital
- Regional capital
- Town

Infrastructure

- National road
- Regional road
- Railway

Forest Management Unit

- Management plan approved
- Management plan in process of elaboration
- Not managed

Council Forest

- Designated
- Proposed

Sale of standing volume

- Active
- Inactive

Protected area

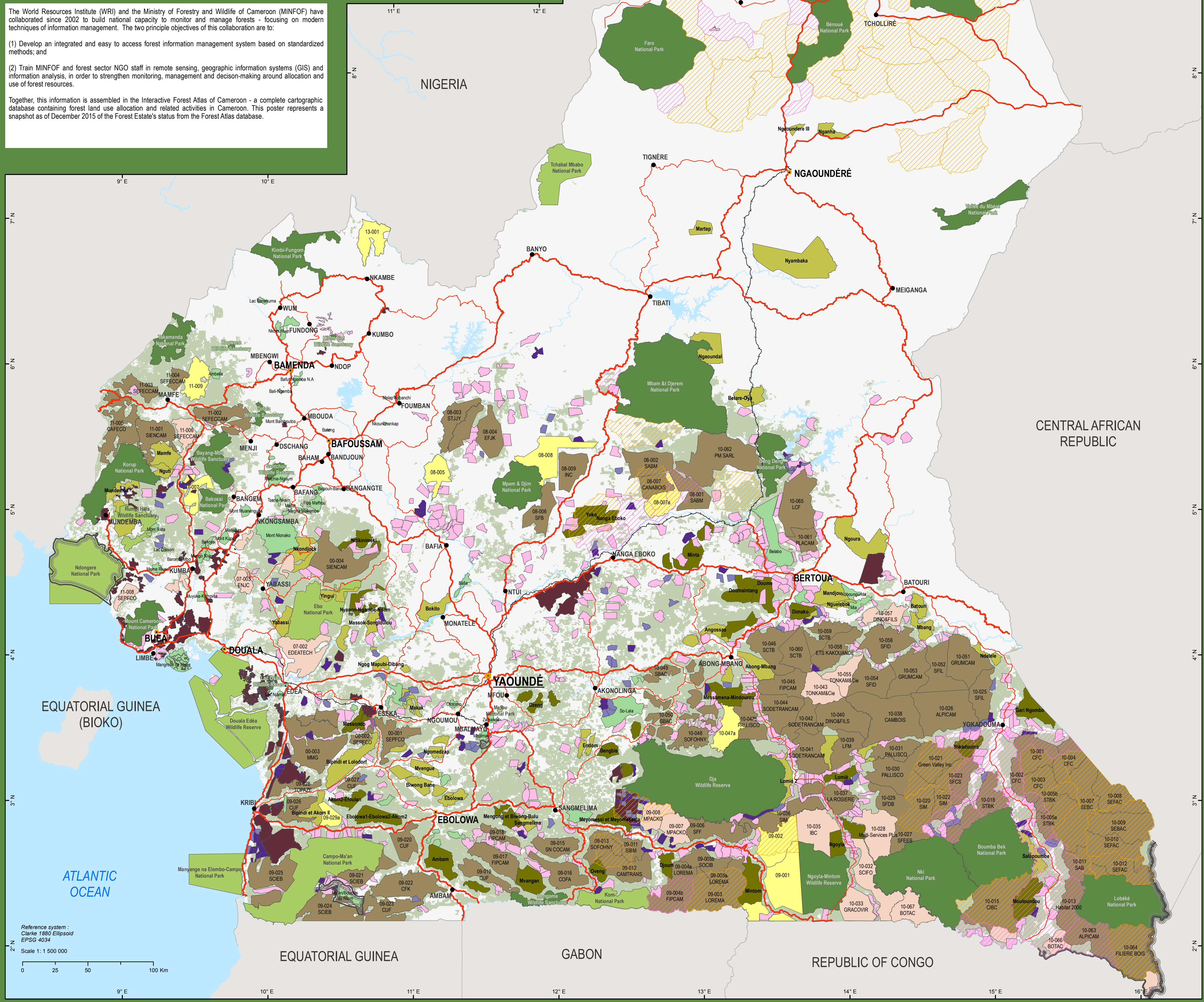
- Designated
- Proposed
- Hunting zone (ZIC)
- Community hunting zone (ZICGC)

Other land use allocation

- Forest reserve
- Community forest
- Agro-industrial zone
- Ramsar site

Basic information

- Dense Forest
- Water



Reference system: Clarke 1880 Ellipsoid EPSG 4034
Scale 1:1 500 000