

CAMEROON'S FOREST ESTATE

December 2014



MINISTRY OF FORESTRY AND WILDLIFE



WORLD RESOURCES INSTITUTE

SUMMARY OF LAND USE ALLOCATION WITHIN THE NATIONAL FOREST ESTATE IN 2014

LEGEND

Permanent Forest Estate (PFE)		
Allocation type	Number	Area (ha)
Forest Management Unit (FMU)	115	6 785 464
Forest management plan approved	89	5 360 510
Forest management plan in process of elaboration	16	845 938
Not allocated	10	579 016
Forest reserves	69	823 749
Protected areas (PA)	39	4 701 138
National Parks	25	3 569 898
Wildlife reserves	6	971 897
Sanctuaries	6	149 417
Integral ecological zones	2	9 926
Hunting zones (ZIC/ZICGC)	65	531 090
Communal Forest (FC)	41	1 638 148
Designated	21	1 201 430
Proposed	20	436 718
Non Permanent Forest Estate (nPFE)		
Community forest (Fcom)	392	1 364 203
Provisional convention	118	406 078
Final convention	274	958 125
Sales of Standing Volume (SSV)	84	187 539
Agro-industrial parcels	74	415 937

Locality

- Political capital
- Regional headquarter
- Divisional headquarter

Infrastructure

- National road
- Regional road
- Railway

Forest Management Unit

- Management plan approved
- Management plan in process of elaboration
- Not allocated

Communal Forest

- Designated
- Proposed

Sale of standing volume

- Active
- Inactive

Protected area

- Designated
- Proposed
- Hunting zone (ZIC)
- Community hunting zone (ZICGC)

Other land use allocation

- Forest reserve
- Community forest
- Agro-industrial zone
- Ramsar site

Basic information

- Dense Forest
- Water

Areas registered in this table are taken from official documents (decrees, public notice, management convention) for FMU, PA, ZIC/ZICGC, FC, Fcom, SSV. Therefore, areas of forest reserves and agro-industrial zones are mostly calculated using the mapping software as official descriptions are not always available. Those related to hunting zones include the overlapping with other forest titles for approximately 2 193 822 ha.

DATA AND MAP PRODUCTION

The data used for the production of this map have been assembled by a team composed of staff from the World Resources Institute (WRI), the Ministry of Forestry and Wildlife (MINFOP) and other partners, including the Centre Technique de Forêt Commune (CTFC) and GIZ-ProPSFE. Rainforest Alliance (RA) actively participated in the data validation process.

This map is produced by the WRI and MINFOP with the support of the United States Agency for International Development (USAID), the Norwegian Ministry for the Environment and the United Kingdom Department for International Development.

This initiative is also supported with software contributions from ESRI and Erdas.

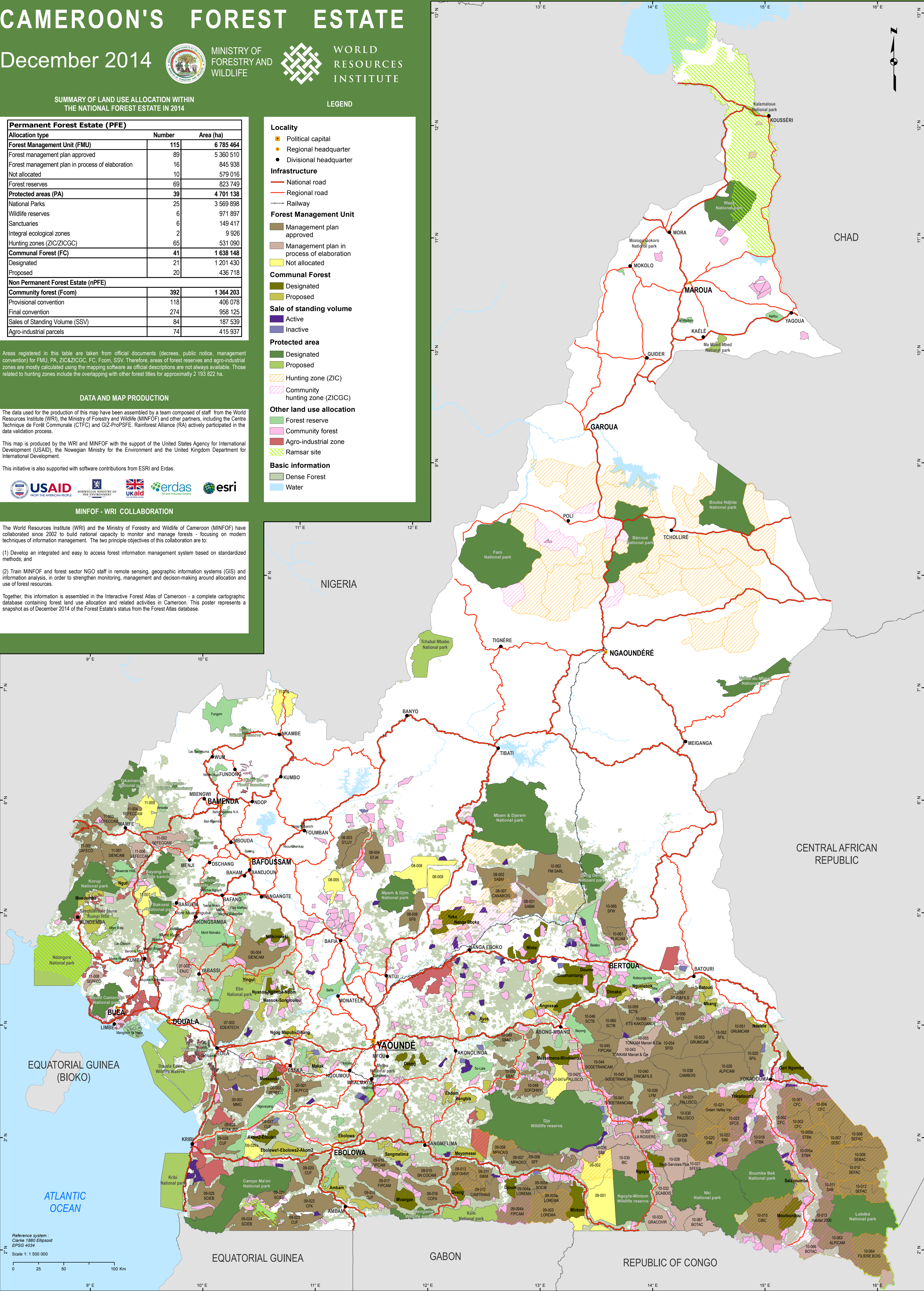


MINFOP - WRI COLLABORATION

The World Resources Institute (WRI) and the Ministry of Forestry and Wildlife of Cameroon (MINFOP) have collaborated since 2002 to build national capacity to monitor and manage forests - focusing on modern techniques of information management. The two principle objectives of this collaboration are to:

- (1) Develop an integrated and easy to access forest information management system based on standardized methods; and
- (2) Train MINFOP and forest sector NGO staff in remote sensing, geographic information systems (GIS) and information analysis, in order to strengthen monitoring, management and decision-making around allocation and use of forest resources.

Together, this information is assembled in the Interactive Forest Atlas of Cameroon - a complete cartographic database containing forest land use allocation and related activities in Cameroon. This poster represents a snapshot as of December 2014 of the Forest Estate's status from the Forest Atlas database.



Reference system: Clarke 1880 Ellipsoid
EPSG 4034
Scale 1:1 500 000